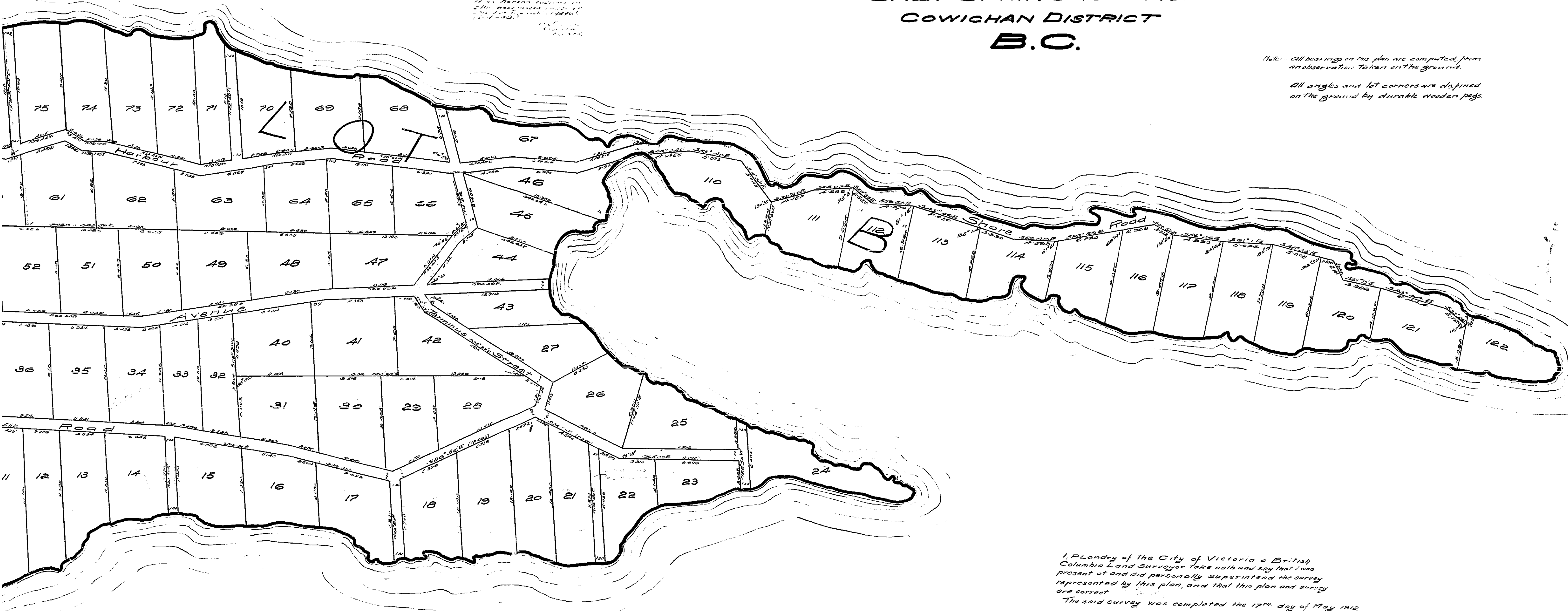


1422.1

Wm. S. Peck
Attest

PLAN
OF SUBDIVISION OF
PART OF SECTIONS 1, 2, AND 3, RANGES 5 EAST,
PART OF SECTION 2 RANGE 6 EAST AND
LOTS 1, 20, AND PART OF LOT 21
SALT SPRING ISLAND
COWICHAN DISTRICT
B.C.

HARBOUR



Note: All bearings on this plan are computed from an observation taken on the ground.
All angles and lot corners are defined on the ground by durable wooden pegs.

I, *Plandry* of the City of Victoria a British Columbia Land Surveyor take oath and say that I was present at and did personally superintend the survey represented by this plan, and that this plan and survey are correct.
The said survey was completed the 17th day of May 1912

Sworn before me this 18 day of May, 1912.

HARBOUR

1422/18

No 1422 Deposition taken July 1911

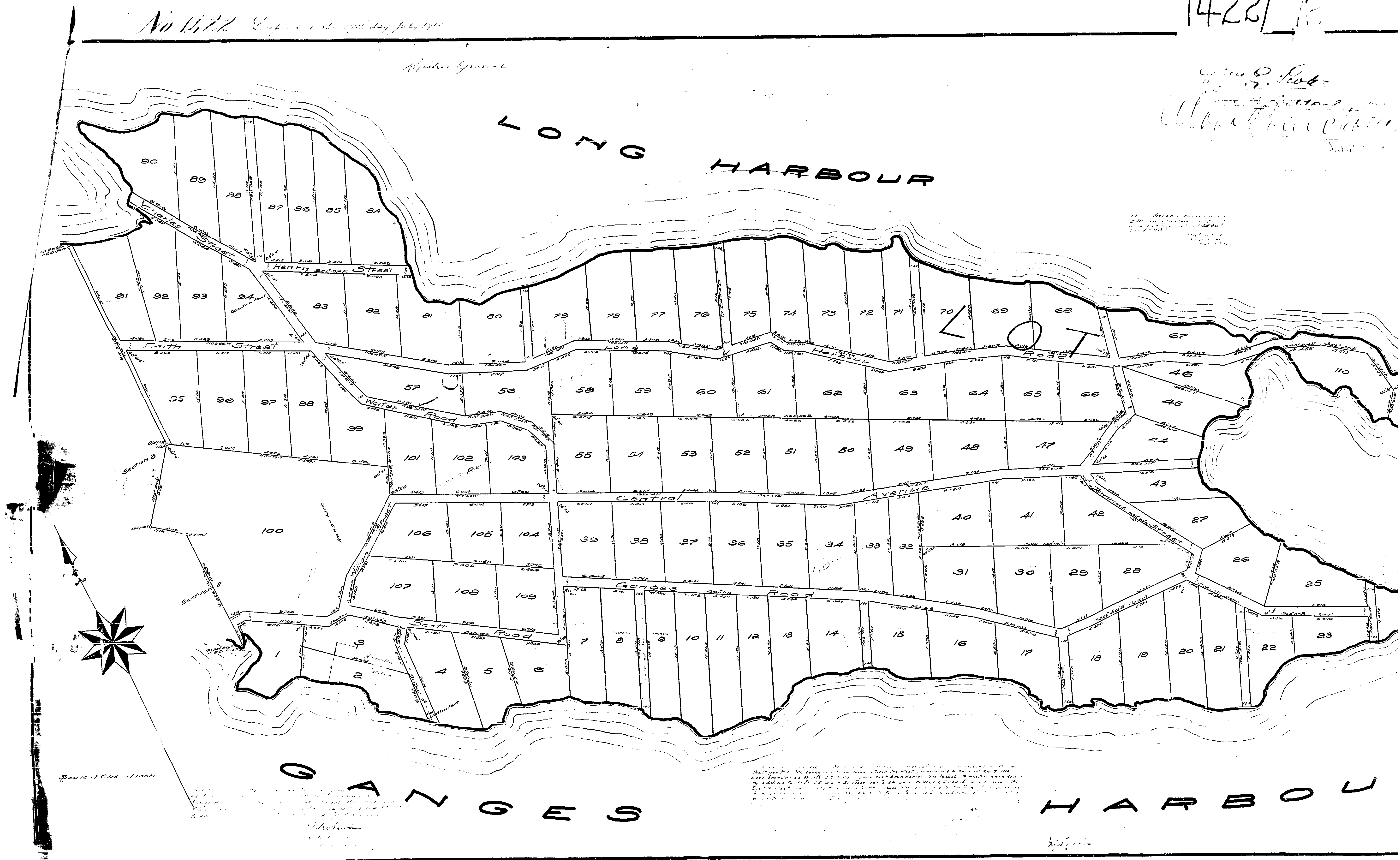
Reputation General

Wm. D. Scott
Attorney at Law
San Francisco, Cal.

LONG HARBOUR

LOT

GAZANGES HARBOUR



These lots are shown as they were in 1911 and are not to be taken as a representation of the present boundaries of the lots. The boundaries shown are those shown on the map of the Long Harbour and Gazanges Harbour made by the Surveyor General of the Province of British Columbia in 1911. The lots are shown as they were in 1911 and are not to be taken as a representation of the present boundaries of the lots.